

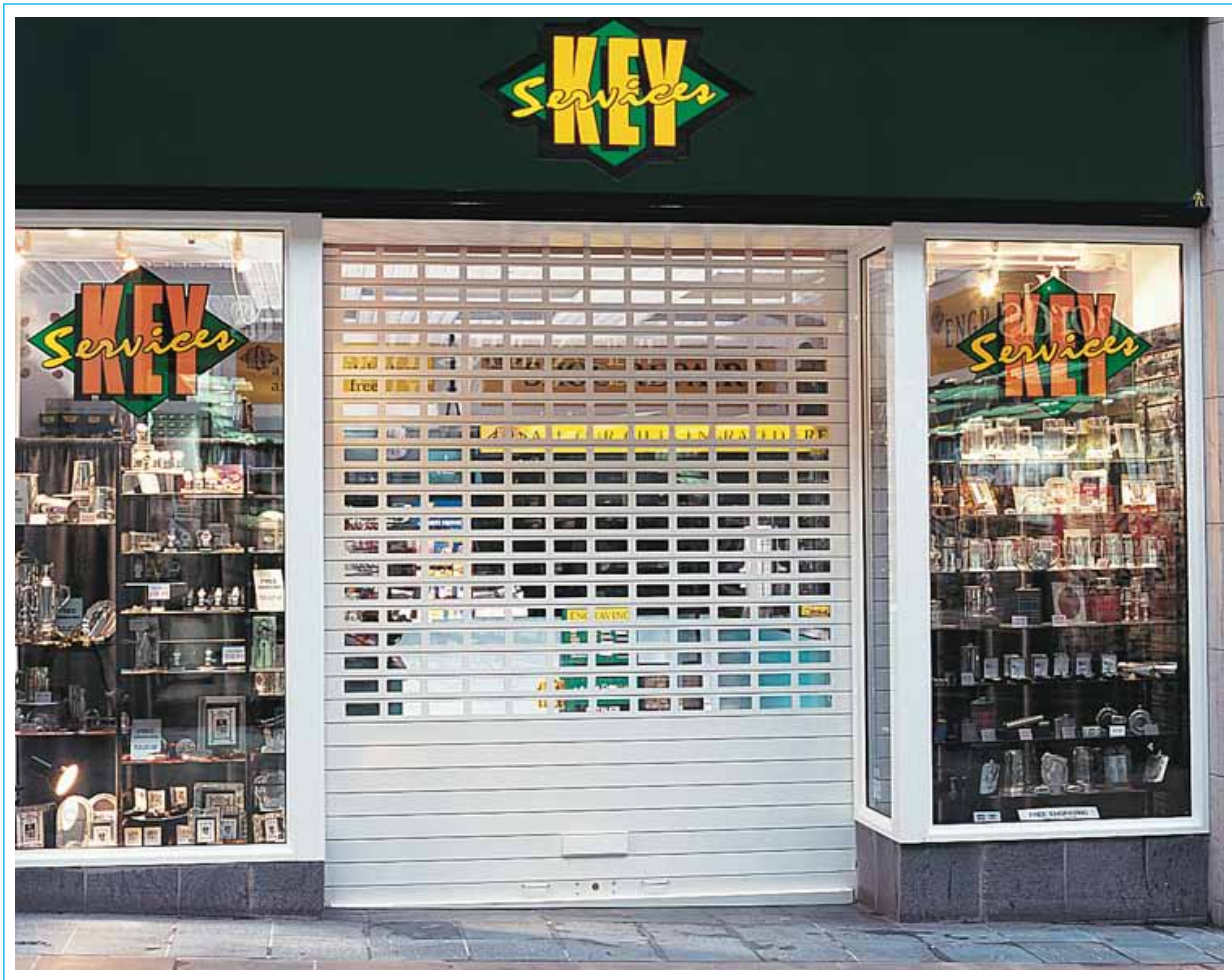
Seceuro Range CD800 Built On

Technical Specifications



www.hag.co.uk
Advice Line 0800 072 3444

Seceuro Range CD800 Built On



What is it made from

The Seceuro range offers an all Aluminium Construction

Typical Uses or Specific Use

Typical uses are from serving areas, Cabinets, Office windows and Domestic Properties.

Security Level

Medium to Low Security

Benefit of product range

The Seceuro Range provides a high level of aesthetics Can be installed where headroom is restricted

For further information about this product please call the HAG advice line on 0800 072 3444 or email info@hag.co.uk

Seceuro Range CD800 Built On



Product Overview

Description

Seceuro CD800 Built On, CD800 is a Single skin extruded aluminium slat, with a polycarbonate insert to offer a partial vision section to the shutter when required.

Common use

A specialised security shutter designed for retail premises. Delivers see-through protection demanded by many local authorities for established high streets and modern shopping centre



Maximum Width

6000mm

Dimensions

Nominally 77mm high x 1.8mm thick. Vision panel provides 65% vision. (150mm x 55mm aperture)

Weight

Optional glazing of 2mm polycarbonate.
9.25kg per square metre. (Without vision)
7.75Kg per square metre. (Vision and glazed)
75 x 70mm spacing 8kg per square metre

Finish

White, brown, alternative standard RAL or BS colours at an extra cost.

Shutter Box Specification

Construction

Roll formed aluminium in two sections; top and bottom boxes.
Bottom box removable for installation and maintenance and Chamfered at 45°.
The shutter box is assembled on die cast aluminium endplates.

Box sizes

Clear opening height (to underside of box):
1500mm, box size 250mm
2900mm, box size 300mm

Finish

White, dark brown. Alternative standard RAL or BS colours at an extra cost.

Guide Rail Specification

Construction

90mm wide x 34mm deep (UPH 250). With High density 4mm pile brush seals for quiet and smooth operation.

Finish

White, dark brown, alternative standard RAL or BS colours at an extra cost

For further information about this product please call the HAG advice line on 0800 072 3444 or email info@hag.co.uk

Seceuro Range CD800 Built On



Operational Specification

Spring Loaded

A counter balanced spring ensures controlled raising and Lowering with a key lock in-built at the bottom of the shutter for Security.

Single Phase Electric

Provision of a 13 amp fused spur is required for installation.

A tubular motor within the barrel assembly with limit switches and the thermal cut out to prevent overheating.

Draw 240 volts and 0.5 - 2.5 amps dependant upon the shutter size

Control

Standard security keyswitch or rocker switch. Other controls are available on request.

Override

A Manual override should be priced and ordered separately for Shutters which are to be installed on exit doorways to permit Operation in the event of a power failure. This is usually only Operable from only one side.

Product specification may change and it is advisable to consult with HAG technical advisors before specifying or ordering. HAG operates a policy of continuous improvement.

Visit our website for more information on HAG Roller Shutters www.hag.co.uk/roller-shutters.html

For further information about this product please call the HAG advice line on 0800 072 3444 or email info@hag.co.uk
