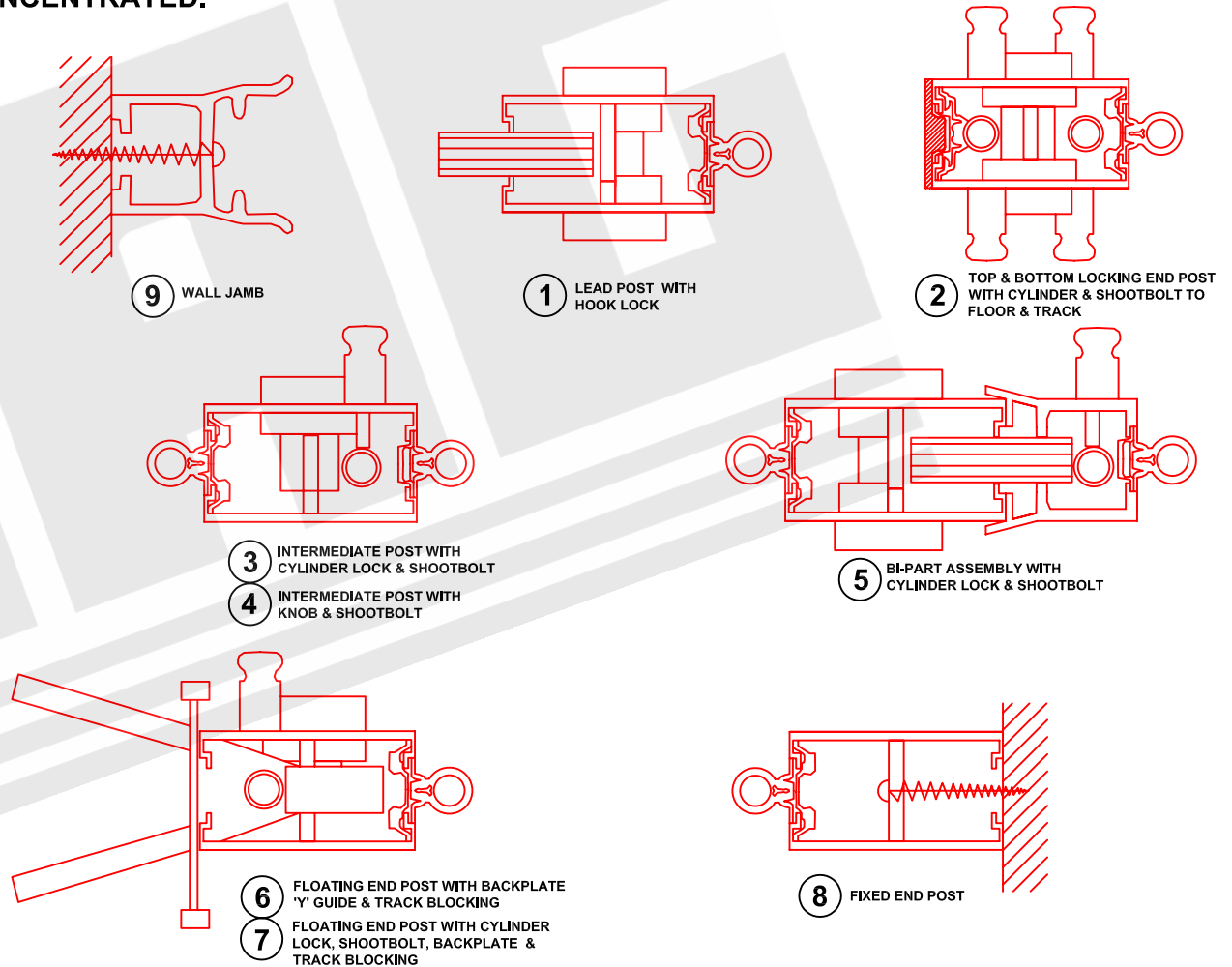
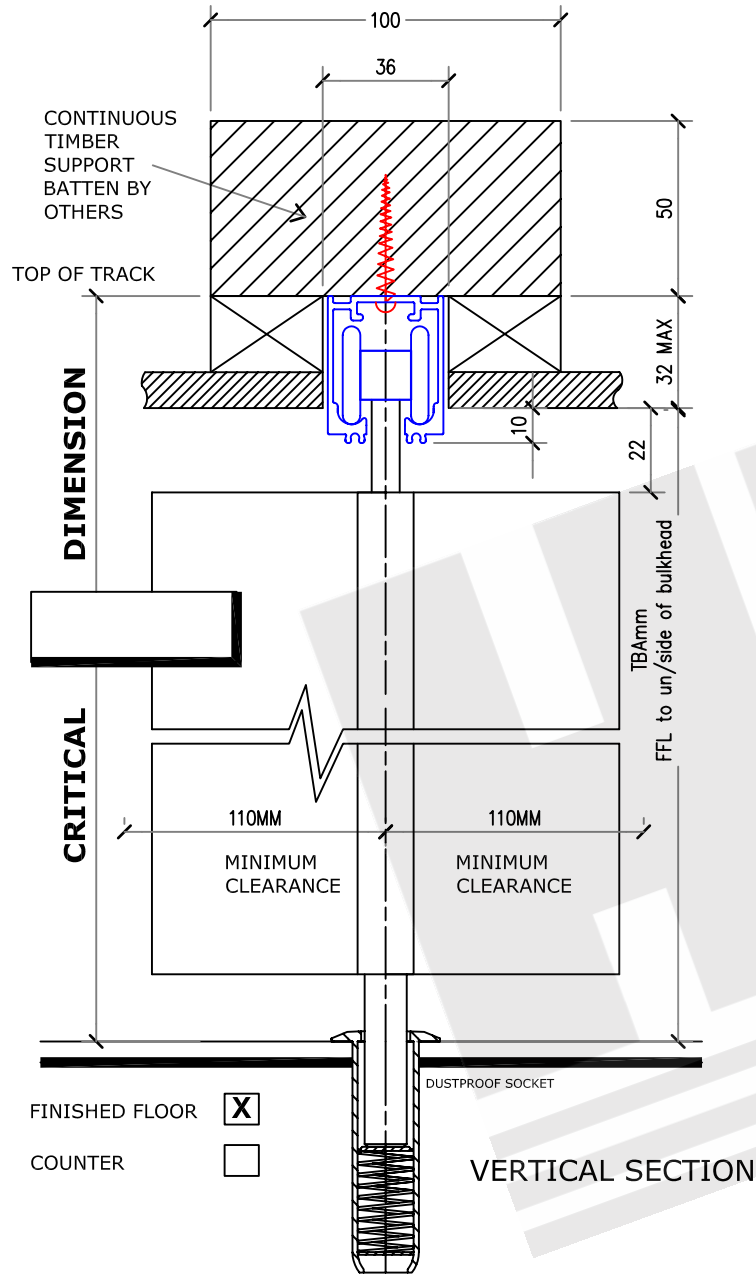


IMPORTANT NOTES:

WOODEN SUPPORT IS TO BE BUILT BY MAIN CONTRACTOR, MINIMUM WEIGHT CAPACITY OF 3 LBS PER SQ FOOT OR 18 KG PER SQ METRE OF GRILLE. TIMBER SUPPORT BATTEN MUST BE SUPPORTED FROM SUITABLE STRUCTURE ie STEEL FRAMING, JOISTS, TIMBER LADDER FRAME OR UNISTRUT TYPE CHANNEL ON THREADED ROD HANGERS.

HAG WILL NOT BE RESPONSIBLE FOR PROBLEMS CAUSED BY INADEQUATE SUPPORT TO TRACK BATTEN AND SUBSEQUENT 'SAGGING' OF GRILLE. PARTICULAR ATTENTION SHOULD BE PAID TO THE STACKING CUPBOARDS WHERE THE WEIGHT IS CONCENTRATED.



DO NOT SCALE

Drawn by:
Checked by:
Approved:

ALL DIMENSIONS IN MM UNLESS OTHERWISE STATED

DRAWING ISSUE: 1

CLIENT APPROVAL:

I confirm sizes, layout, model type and colour are as detailed and approval is given for manufacture to commence

Sign: Print: Date: