

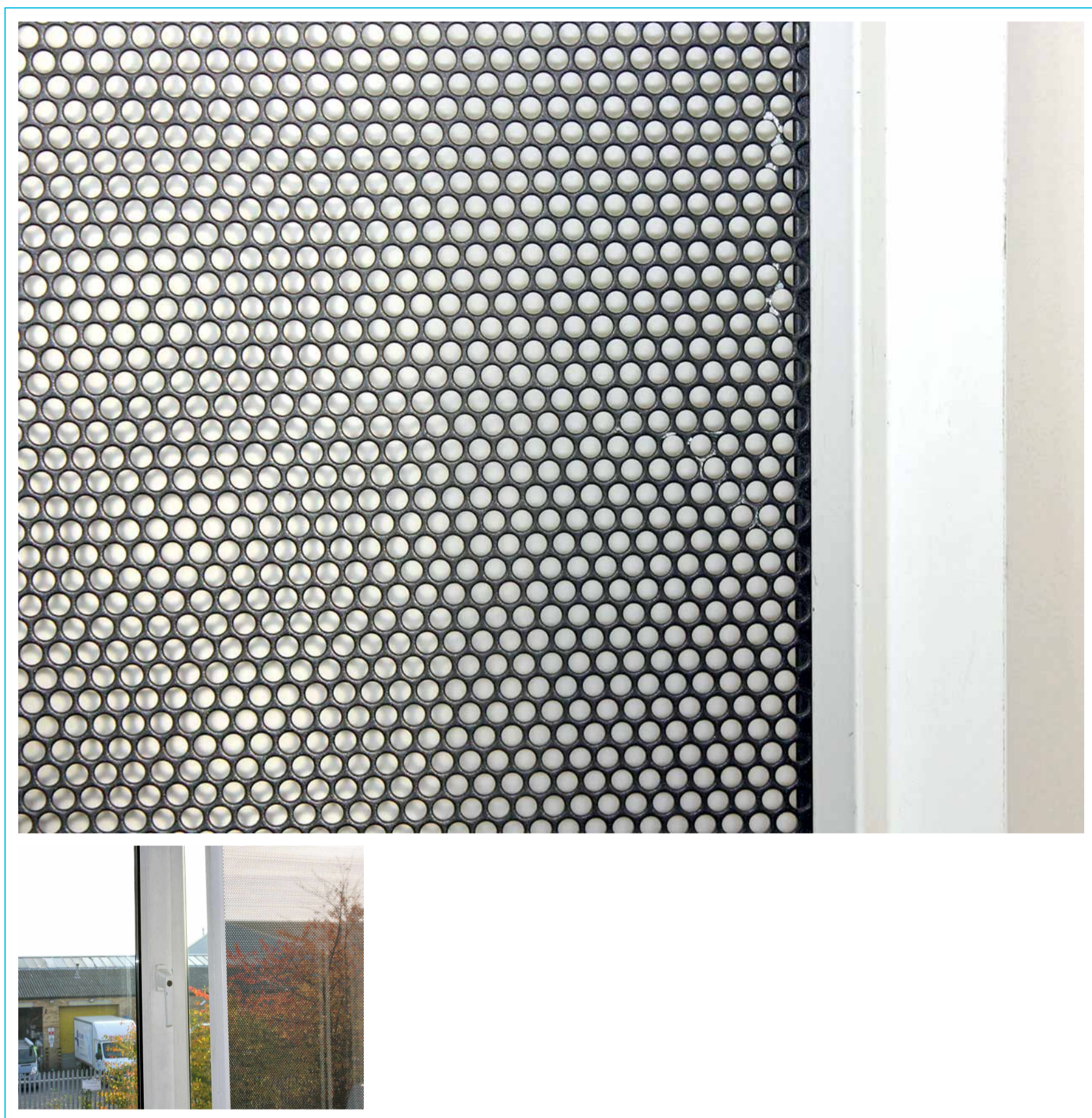
# Seceuro Mesh Fixed Window Security Shutter Panels

Technical Specifications



[www.hag.co.uk](http://www.hag.co.uk)  
Advice Line 0800 072 3444

# Seceuro Mesh Fixed Window Security Shutter Panels



Low maintenance fixed mesh security shutter panels designed to provide additional protection to windows and glass doors. Seceuro Mesh allows 60% of external light to penetrate while delivering a high level of security. They are accredited and can reduce insurance premiums. Maximum width up to 1,800 mm (in one section).

## Description

A 2mm Steel Mesh held in a aluminium frame with a matrix of 4mm diameter perforations providing 60% light. The perforated design gives the appearance of tinted glass which is unobtrusive and blend into the look of the building.

## Common use

# Seceuro Mesh Fixed Window Security Shutter Panels

Fixed window mesh to secure public, commercial and private building windows.

## Dimensions

Constructed from a 2mm thick cold rolled galvanised steel and encase in an aluminium frame, when fitted to steel, brick, concrete or hard wood timber seceurmesh is compliant with LPS 1175 Level 1.

## Operation

Fixed Only

## Finish

The perforated mesh infill section is powder coated black in an external grade process and the supporting framework is finished In White powder coat as standard but can be painted to suit site specific colours at an additional cost.

---

Product specification may change and it is advisable to consult with HAG technical advisors before specifying or ordering. HAG operates a policy of continuous improvement.

---

---