

Armourguard Through Vision

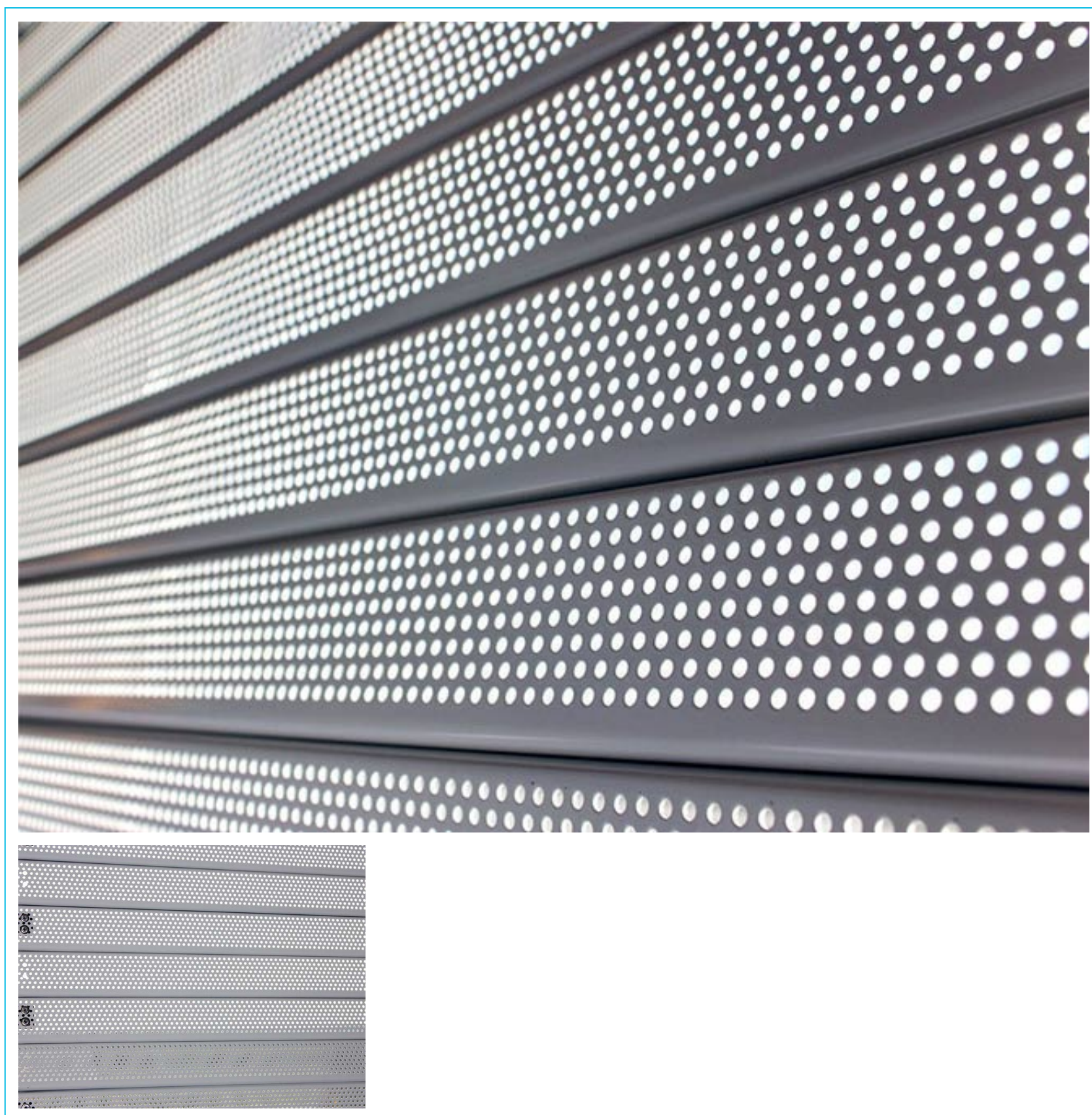
Shutters Model P1

Technical Specifications



www.hag.co.uk
Advice Line 0800 072 3444

Armourguard Through Vision Shutters Model P1



The Model P1 steel security shutters provides 30% through vision and a degree of ventilation via 3 mm perforations throughout each 0.9 mm thick galvanised steel section. Offers a medium level of security. Manual or electric operation depending on specification. Recommended maximum width 3500 mm.

Product Overview

Description

The Armourguard P1 security shutters are constructed from 50mm flat, galvanised 20 gauge lath with 3mm perforations. (30% Vision)

Common use

Armourguard Through Vision Shutters Model P1

Kiosk, bars and shop fronts security shutters where vision or ventilation is required

Maximum Width

3500mm

Dimensions

Normally 50mm x 0.91mm

Weight

13kg per square metre

Finish

Galvanised bright rolled mild steel, polyester powder coat colours are available.

Shutter Box Specification

Construction

0.91mm bright spangle galvanised pressed steel coil casing available in various different designs to suit individual circumstances.

Box sizes

Overall height (top of box)

Up to 2050mm box size 254mm

Up to 2800mm box size 305mm

Up to 3500mm box size 355mm

Finish

Galvanised steel standard polyester powder coat colours are available at an additional cost.

Guide Rail Specification

Construction

Standard guide rails: 38mm x 32mm x 3mm – 67mm x 32mm x 3mm dependant on width. Electric shutters require a 50mm x 50mm steel box section (both sides) used to allow for motor unit and safety brake.

Finish

Galvanised steel standard polyester powder coat colours are available.

Operational Specification

Spring Loaded

A counter balanced spring ensures controlled raising and lowering with a key lock in-built at the bottom of the shutter for security.

Single Phase Electric

A tubular motor within the barrel assembly with limit switches and thermal cut out to prevent overheating. Draw 240 volts and 0.5 – 2.5 amps dependant upon the shutter size. Provision of a 13 amp fused spur is required for installation.

Override

A manual override is included to operate the shutter in the event of a power failure. This is usually only Operable from only one side.

Control

Standard security key switch or rocker switch. Other controls are available on request.

Armourguard Through Vision Shutters Model P1

Product specification may change and it is advisable to consult with HAG technical advisors before specifying or ordering. HAG operates a policy of continuous improvement.
