

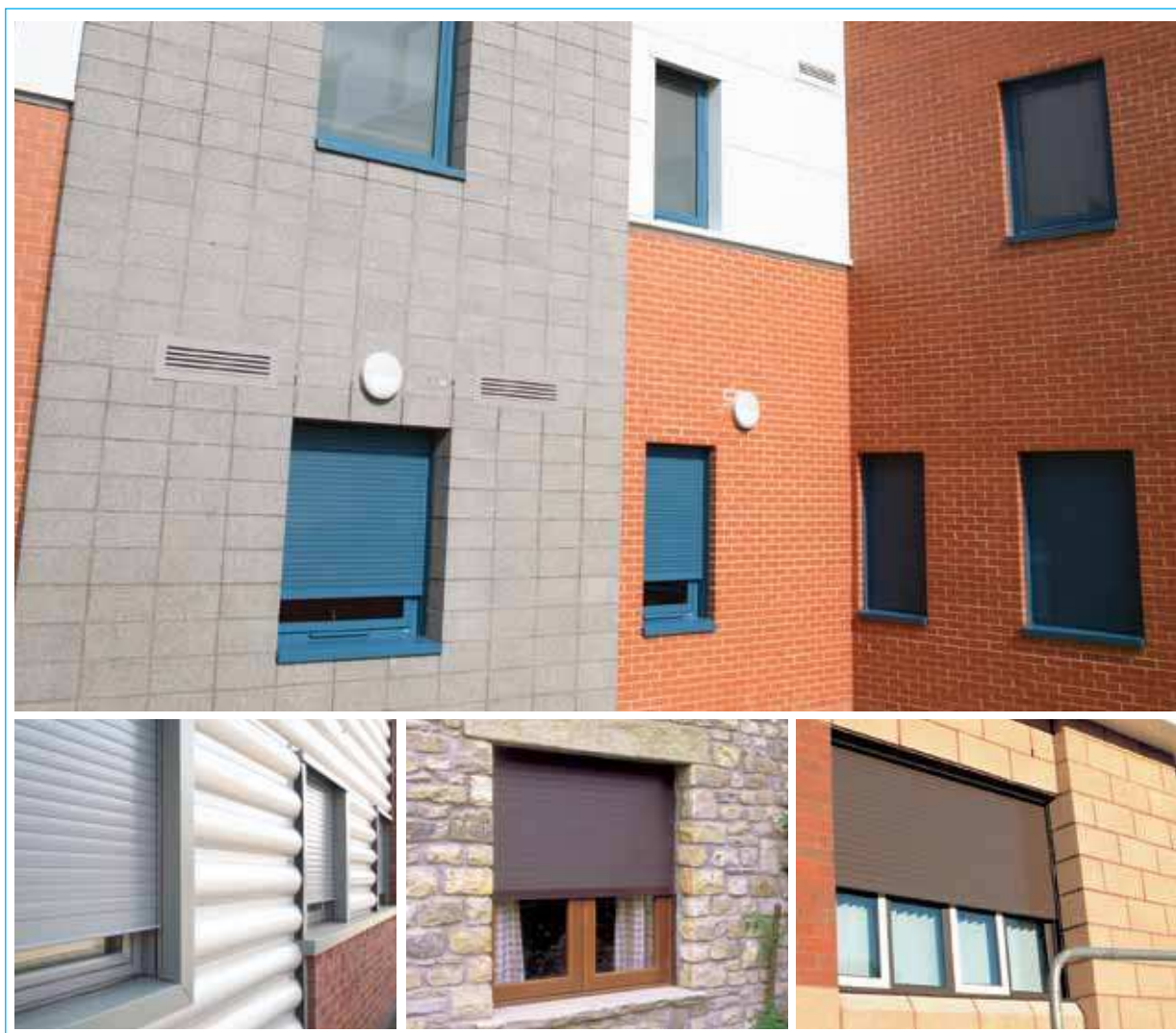
# Seceuro Range CD38 Built In

Technical Specifications



[www.hag.co.uk](http://www.hag.co.uk)  
Advice Line 0800 072 3444

# Seceuro Range CD38 Built In



## What is it made from

The Seceuro range offers an all Aluminium Construction

## Typical Uses or Specific Use

Typical uses are from serving areas, Cabinets, Office windows and Domestic Properties.

## Security Level

Medium to Low Security

## Benefit of product range

The Seceuro Range provides a high level of aesthetics Can be installed where headroom is restricted

---

For further information about this product please call the HAG advice line on 0800 072 3444 or email [info@hag.co.uk](mailto:info@hag.co.uk)

---

# Seceuro Range CD38 Built In



## Product Overview

### Description

Seceuro CD 38 Built In, CD38 is a double skin extruded aluminium non-vented slat.

### Common use

For Window and Door Applications on new Build Projects.

### Maximum Width

3000mm

### Dimensions

Nominally 38mm high x 9mm thick.

### Weight

8kg per square metre.

### Finish

White, brown or cream. bottom slat - white, dark brown.



## Shutter Box Specification

### Construction

Honeycomb section PVC.

Removable vertical panel for installation and maintenance; tight clip getting to withstand draughts and moisture ingress. Drive mechanism mounted on metal inner plates for stability and easy access for maintenance.

### Box sizes

Clear opening height (to underside of box):

1800mm, box size 200mm

2300mm, box size 225mm

3000mm, box size 295mm

### Finish

White only.

## Guide Rail Specification

### Construction

Ref - H34 Extruded aluminium with an integral box section for reinforcement and to facilitate fixing. High density 6mm pile brush seals for quiet and smooth operation. 60mm wide x 40mm deep.

3000mm, box size 295mm

White, dark brown. The CD38 slats and guide rails can be powder coated to alternative standard RAL or BS colours at extra cost.

# Seceuro Range CD38 Built In



## Operational Specification

### Rod Crank Operation

For shutters up to 25kg

Incorporates a geared rod crank handle 1500mm long which hangs vertically and secures into a clip when not in use. The gear is installed in the box, the gear ratio varies with shutter weight

### Spring Loaded

A counter balanced spring ensures controlled raising and Lowering with a key lock in-built at the bottom of the shutter for Security.

### Single Phase Electric

Provision of a 13 amp fused spur is required for installation.

A tubular motor within the barrel assembly with limit switches and the thermal cut out to prevent overheating.

Draw 240 volts and 0.5 - 2.5 amps dependant upon the shutter size

### Control

Standard security keyswitch or rocker switch. Other controls are available on request.

### Override

A Manual override should be priced and ordered separately for Shutters which are to be installed on exit doorways to permit Operation in the event of a power failure. This is usually only Operable from only one side.

---

Product specification may change and it is advisable to consult with HAG technical advisors before specifying or ordering. HAG operates a policy of continuous improvement.

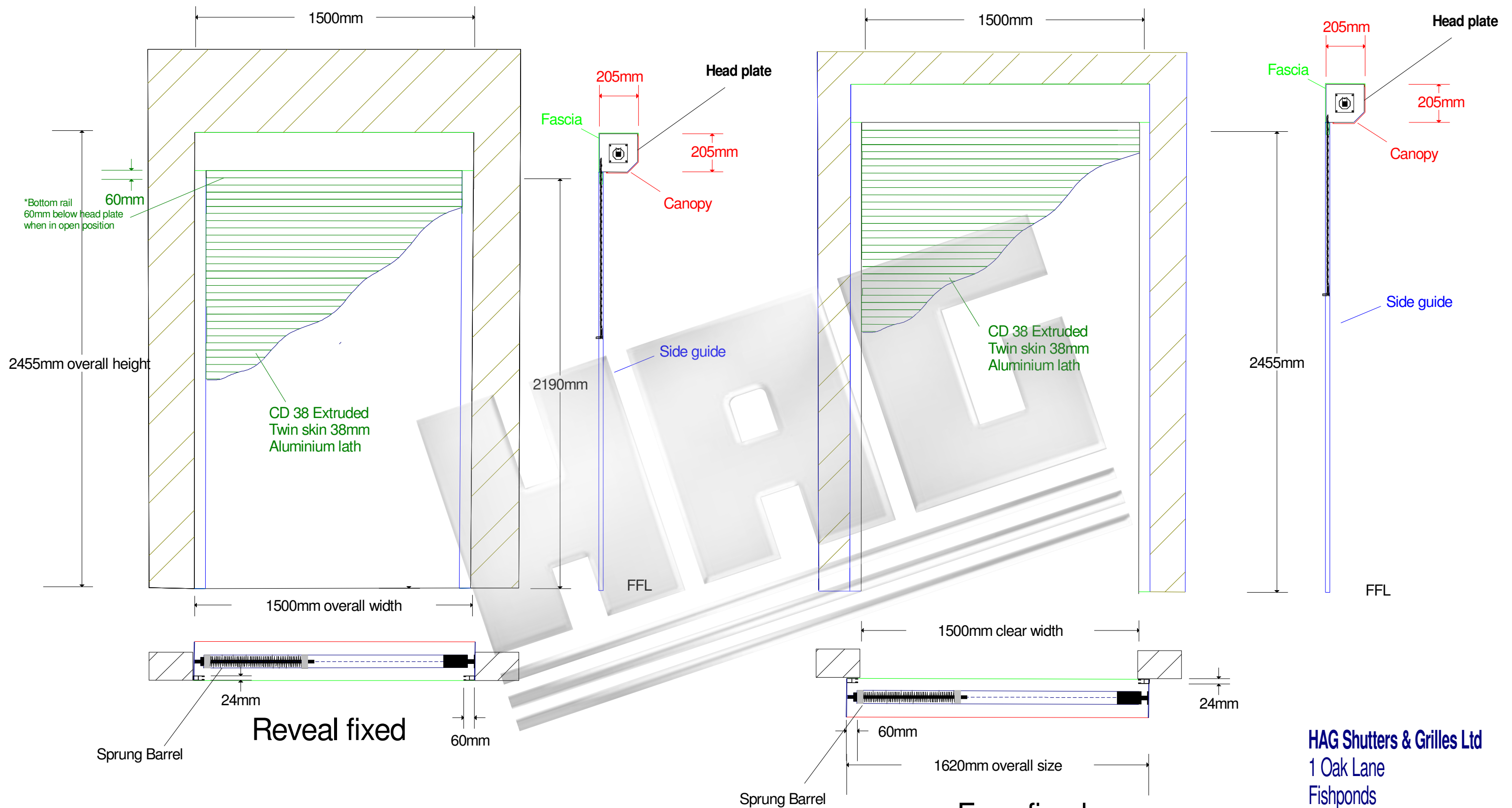
---

Visit our website for more information on HAG Roller Shutters [www.hag.co.uk/roller-shutters.html](http://www.hag.co.uk/roller-shutters.html)

---

For further information about this product please call the HAG advice line on 0800 072 3444 or email [info@hag.co.uk](mailto:info@hag.co.uk)

---



**Reveal fixed**

**Face fixed**

**Head plate sizes:**

Overall height: Upto 1600mm Head plate = 165mm  
 Overall height: Upto 1900mm Head plate = 180mm  
 Overall height: Upto 2800mm Head plate = 205mm

**Minimum Side guide requirements:**

Overall width: Upto 4000mm Guide = 60mm X 24mm

Maximum width: 4000mm  
 Maximum height: 2800mm

Curtain weight: 8kgs per m2

**Product:** CD38 Extruded Aluminium

**Operation:** Spring & Locking system

**Fixing:** Reveal fixed or Face fixed

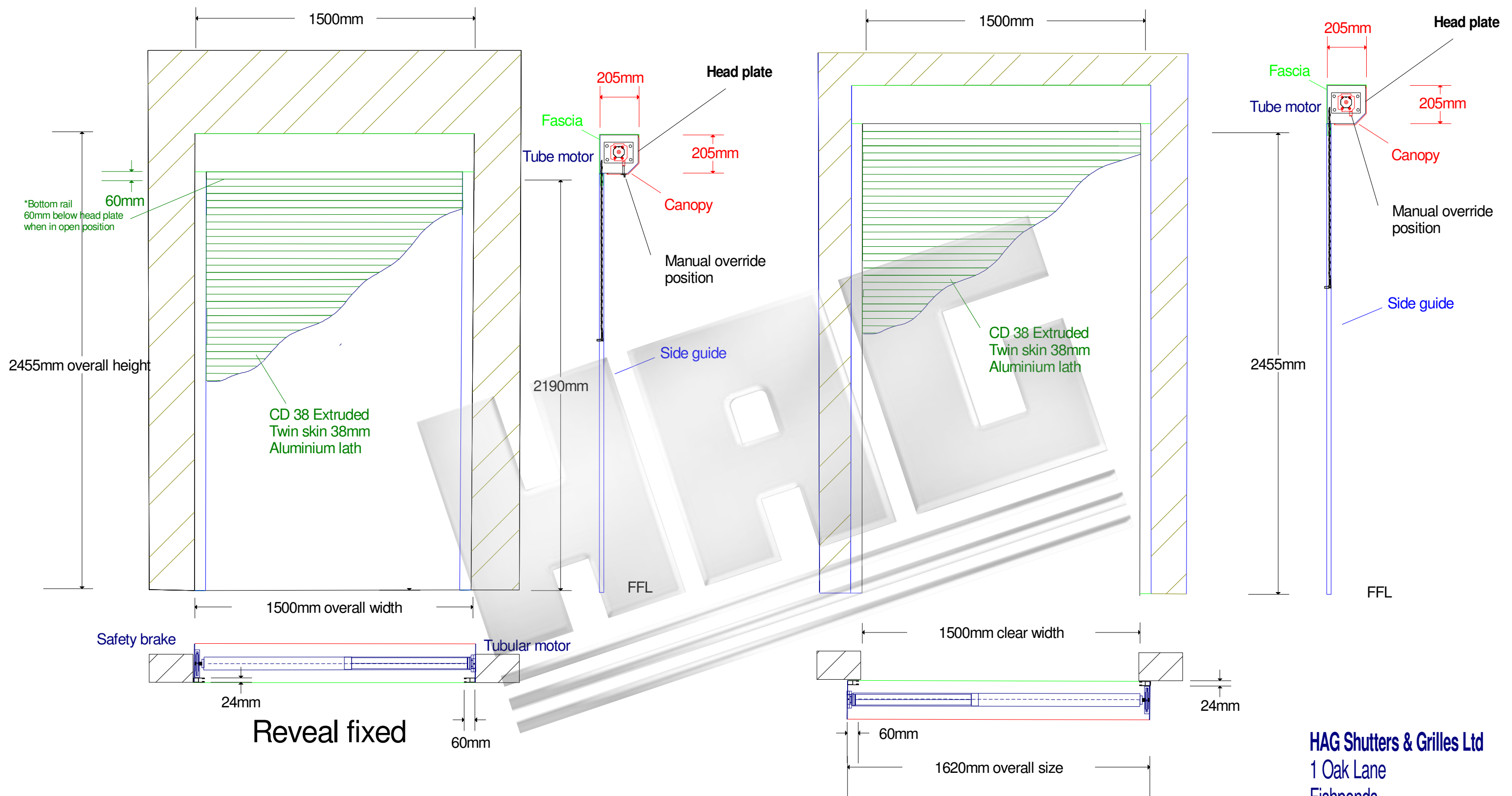
**Finish:** White (Ral 9010) or Brown (Ral 8014) as standard

**HAG Shutters & Grilles Ltd**  
 1 Oak Lane  
 Fishponds  
 Bristol  
 BS5 7UY

Tel: 0117 9654888  
 Fax: 0117 9657773  
[www.hag.co.uk](http://www.hag.co.uk)  
[info@hag.co.uk](mailto:info@hag.co.uk)

**Installation & Space requirements for standard Manual shutter**

Scale: 1:20 @ A3



**Product:** CD38 Extruded Aluminium  
**Operation:** Single phase tube motor with override  
**Operator:** security keyswitch  
**Power requirements:** 13amp fused spur within 1 metre of opening  
**Fixing:** Reveal fixed or Face fixed  
**Finish:** White (Ral 9010) or Brown (Ral 8014) as standard

**Head plate sizes:**  
 Overall height: Upto 1600mm Head plate = 165mm  
 Overall height: Upto 1900mm Head plate = 180mm  
 Overall height: Upto 2800mm Head plate = 205mm  
 Overall height: Upto 5000mm Head plate = 250mm

**Minimum Side guide requirements:**  
 Overall width: Upto 4000mm Guide = 60mm X 24mm

**Face fixed**

Maximum width: 4000mm  
 Maximum height: 5000mm  
 Curtain weight: 8kgs per m2

**HAG Shutters & Grilles Ltd**  
 1 Oak Lane  
 Fishponds  
 Bristol  
 BS5 7UY

Tel: 0117 9654888  
 Fax: 0117 9657773  
[www.hag.co.uk](http://www.hag.co.uk)  
[info@hag.co.uk](mailto:info@hag.co.uk)

**Installation & Space requirements for standard Electric shutter**

Scale: 1:20 @ A3