

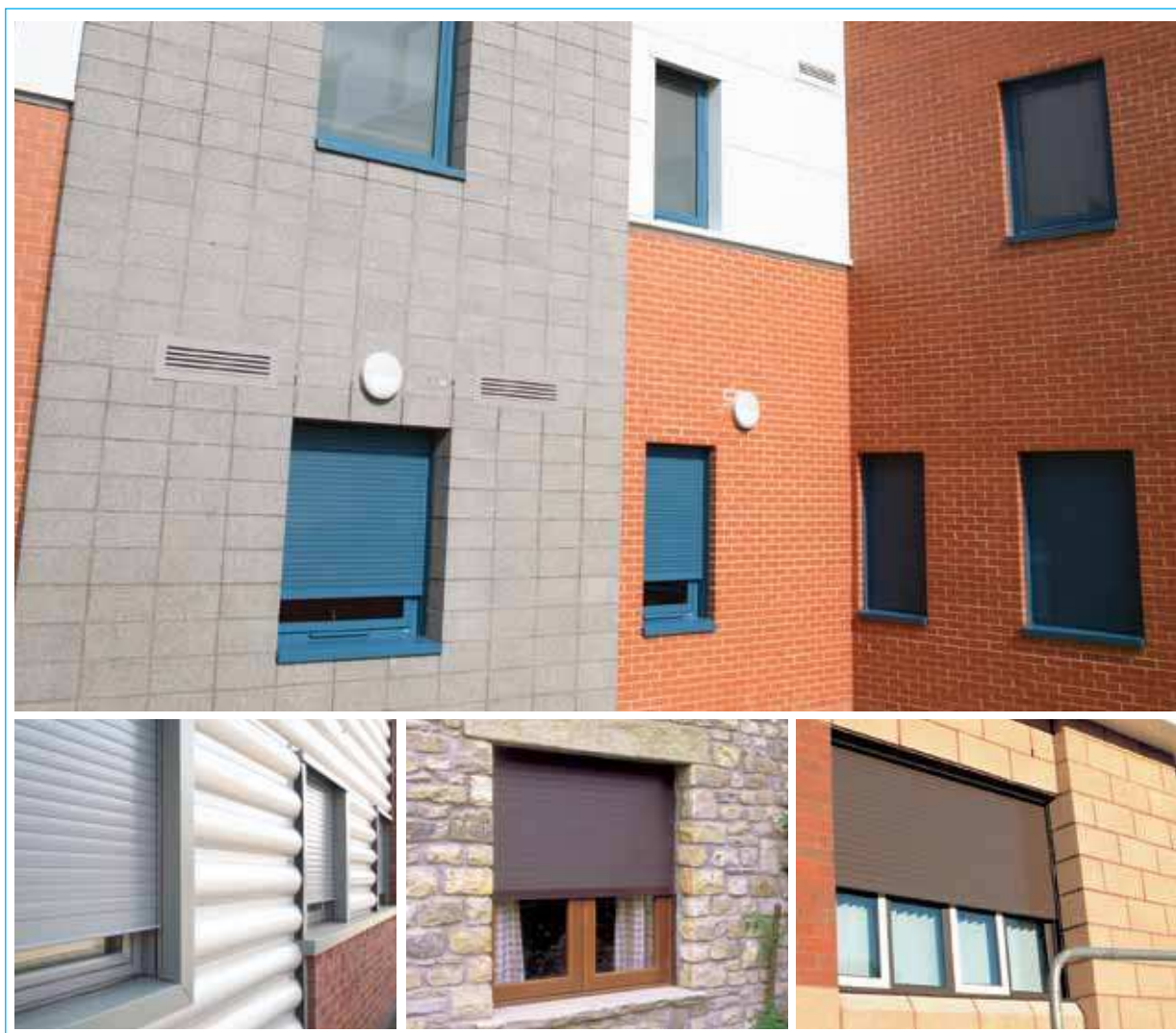
Seceuro Range CD38 Built In

Technical Specifications



www.hag.co.uk
Advice Line 0800 072 3444

Seceuro Range CD38 Built In



What is it made from

The Seceuro range offers an all Aluminium Construction

Typical Uses or Specific Use

Typical uses are from serving areas, Cabinets, Office windows and Domestic Properties.

Security Level

Medium to Low Security

Benefit of product range

The Seceuro Range provides a high level of aesthetics Can be installed where headroom is restricted

For further information about this product please call the HAG advice line on 0800 072 3444 or email info@hag.co.uk

Seceuro Range CD38 Built In



Product Overview

Description

Seceuro CD 38 Built In, CD38 is a double skin extruded aluminium non-vented slat.

Common use

For Window and Door Applications on new Build Projects.

Maximum Width

3000mm

Dimensions

Nominally 38mm high x 9mm thick.

Weight

8kg per square metre.

Finish

White, brown or cream. bottom slat - white, dark brown.



Shutter Box Specification

Construction

Honeycomb section PVC.

Removable vertical panel for installation and maintenance; tight clip getting to withstand draughts and moisture ingress. Drive mechanism mounted on metal inner plates for stability and easy access for maintenance.

Box sizes

Clear opening height (to underside of box):

1800mm, box size 200mm

2300mm, box size 225mm

3000mm, box size 295mm

Finish

White only.

Guide Rail Specification

Construction

Ref - H34 Extruded aluminium with an integral box section for reinforcement and to facilitate fixing. High density 6mm pile brush seals for quiet and smooth operation. 60mm wide x 40mm deep.

3000mm, box size 295mm

White, dark brown. The CD38 slats and guide rails can be powder coated to alternative standard RAL or BS colours at extra cost.

Seceuro Range CD38 Built In



Operational Specification

Rod Crank Operation

For shutters up to 25kg

Incorporates a geared rod crank handle 1500mm long which hangs vertically and secures into a clip when not in use. The gear is installed in the box, the gear ratio varies with shutter weight

Spring Loaded

A counter balanced spring ensures controlled raising and Lowering with a key lock in-built at the bottom of the shutter for Security.

Single Phase Electric

Provision of a 13 amp fused spur is required for installation.

A tubular motor within the barrel assembly with limit switches and the thermal cut out to prevent overheating.

Draw 240 volts and 0.5 - 2.5 amps dependant upon the shutter size

Control

Standard security keyswitch or rocker switch. Other controls are available on request.

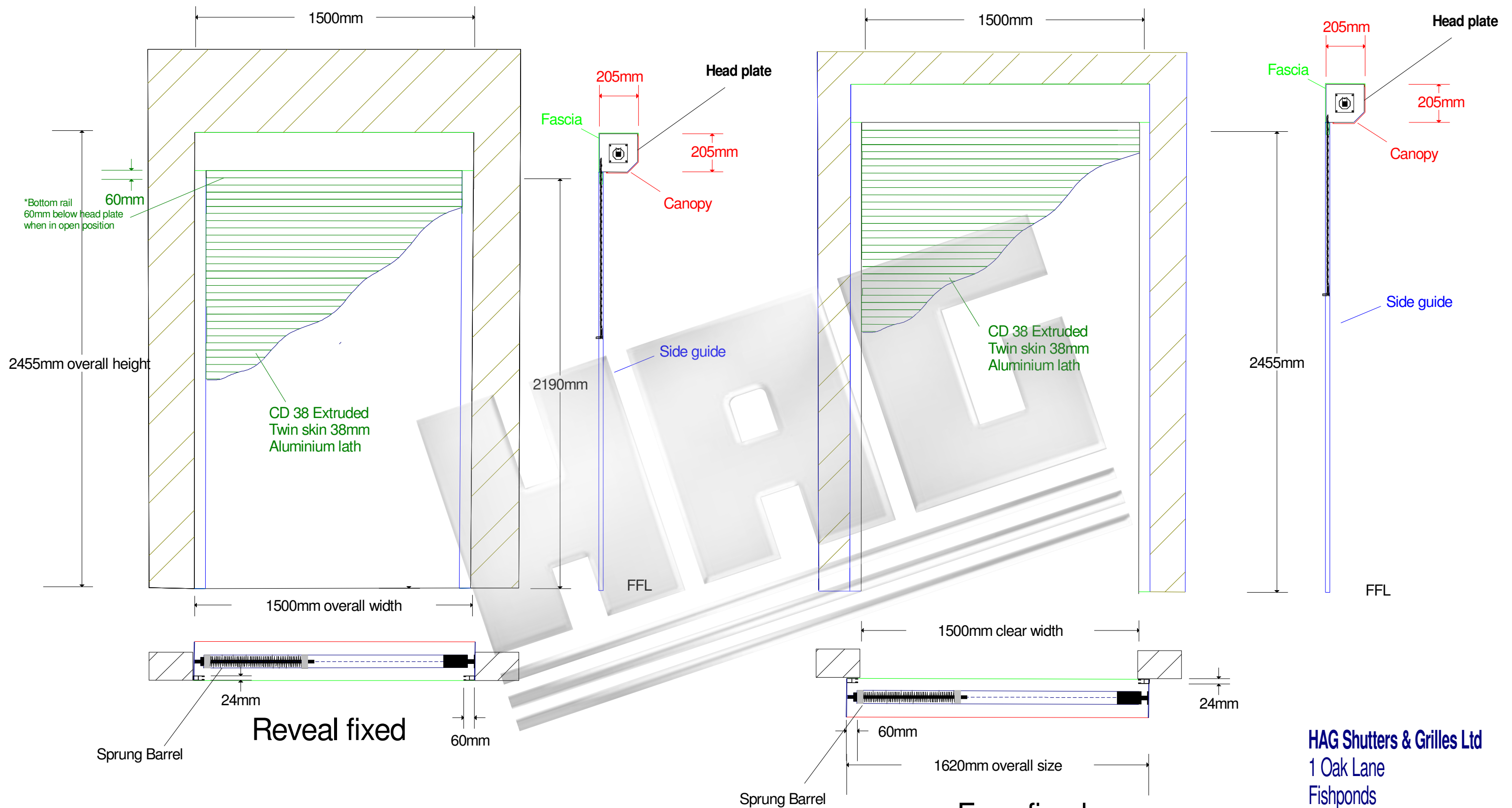
Override

A Manual override should be priced and ordered separately for Shutters which are to be installed on exit doorways to permit Operation in the event of a power failure. This is usually only Operable from only one side.

Product specification may change and it is advisable to consult with HAG technical advisors before specifying or ordering. HAG operates a policy of continuous improvement.

Visit our website for more information on HAG Roller Shutters www.hag.co.uk/roller-shutters.html

For further information about this product please call the HAG advice line on 0800 072 3444 or email info@hag.co.uk



Product : CD38 Extruded Aluminium
Operation: Spring & Locking system
Fixing: Reveal fixed or Face fixed
Finish: White (Ral 9010) or Brown (Ral 8014) as standard

Head plate sizes:
 Overall height: Upto 1600mm Head plate = 165mm
 Overall height: Upto 1900mm Head plate = 180mm
 Overall height: Upto 2800mm Head plate = 205mm

Minimum Side guide requirements:
 Overall width: Upto 4000mm Guide = 60mm X 24mm

Maximum width: 4000mm
Maximum height: 2800mm

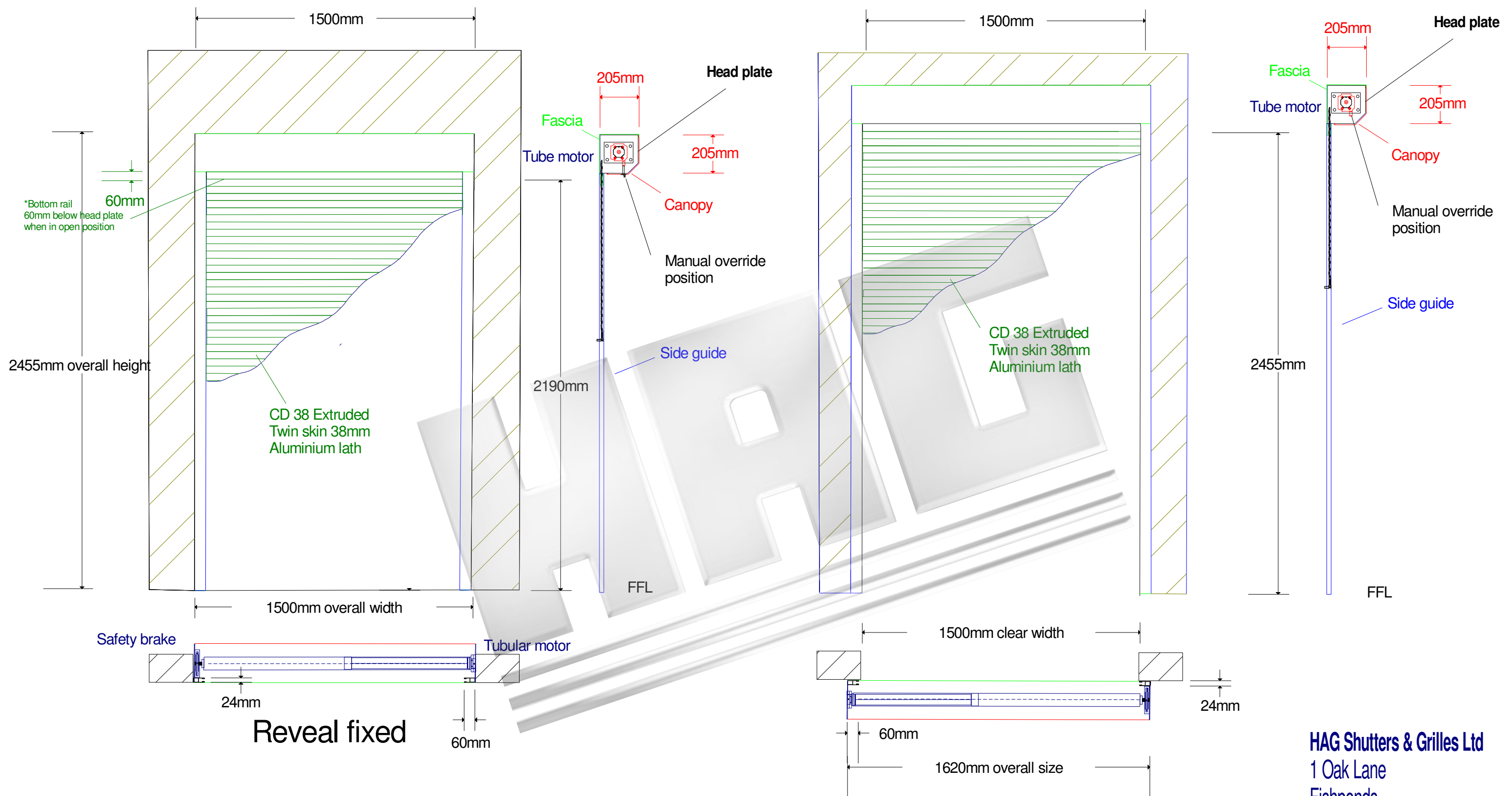
Curtain weight: 8kgs per m²

HAG Shutters & Grilles Ltd
 1 Oak Lane
 Fishponds
 Bristol
 BS5 7UY

Tel: 0117 9654888
 Fax: 0117 9657773
www.hag.co.uk
info@hag.co.uk

Installation & Space requirements for standard Manual shutter

Scale: 1:20 @ A3



Product: CD38 Extruded Aluminium
Operation: Single phase tube motor with override
Operator: security keyswitch
Power requirements: 13amp fused spur within 1 metre of opening
Fixing: Reveal fixed or Face fixed
Finish: White (Ral 9010) or Brown (Ral 8014) as standard

Head plate sizes:
 Overall height: Upto 1600mm Head plate = 165mm
 Overall height: Upto 1900mm Head plate = 180mm
 Overall height: Upto 2800mm Head plate = 205mm
 Overall height: Upto 5000mm Head plate = 250mm

Minimum Side guide requirements:
 Overall width: Upto 4000mm Guide = 60mm X 24mm

Face fixed

Maximum width: 4000mm
 Maximum height: 5000mm
 Curtain weight: 8kgs per m2

HAG Shutters & Grilles Ltd
 1 Oak Lane
 Fishponds
 Bristol
 BS5 7UY

Tel: 0117 9654888
 Fax: 0117 9657773
www.hag.co.uk
info@hag.co.uk

Installation & Space requirements for standard Electric shutter

Scale: 1:20 @ A3