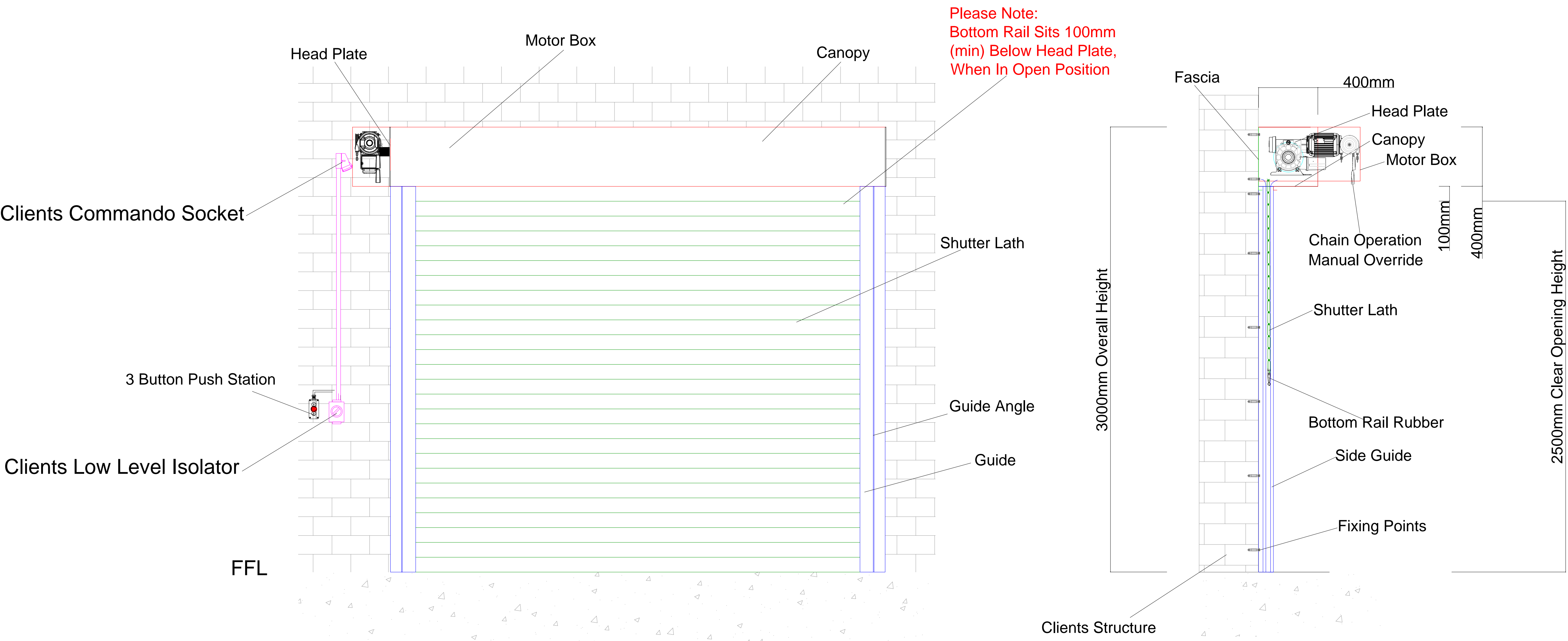
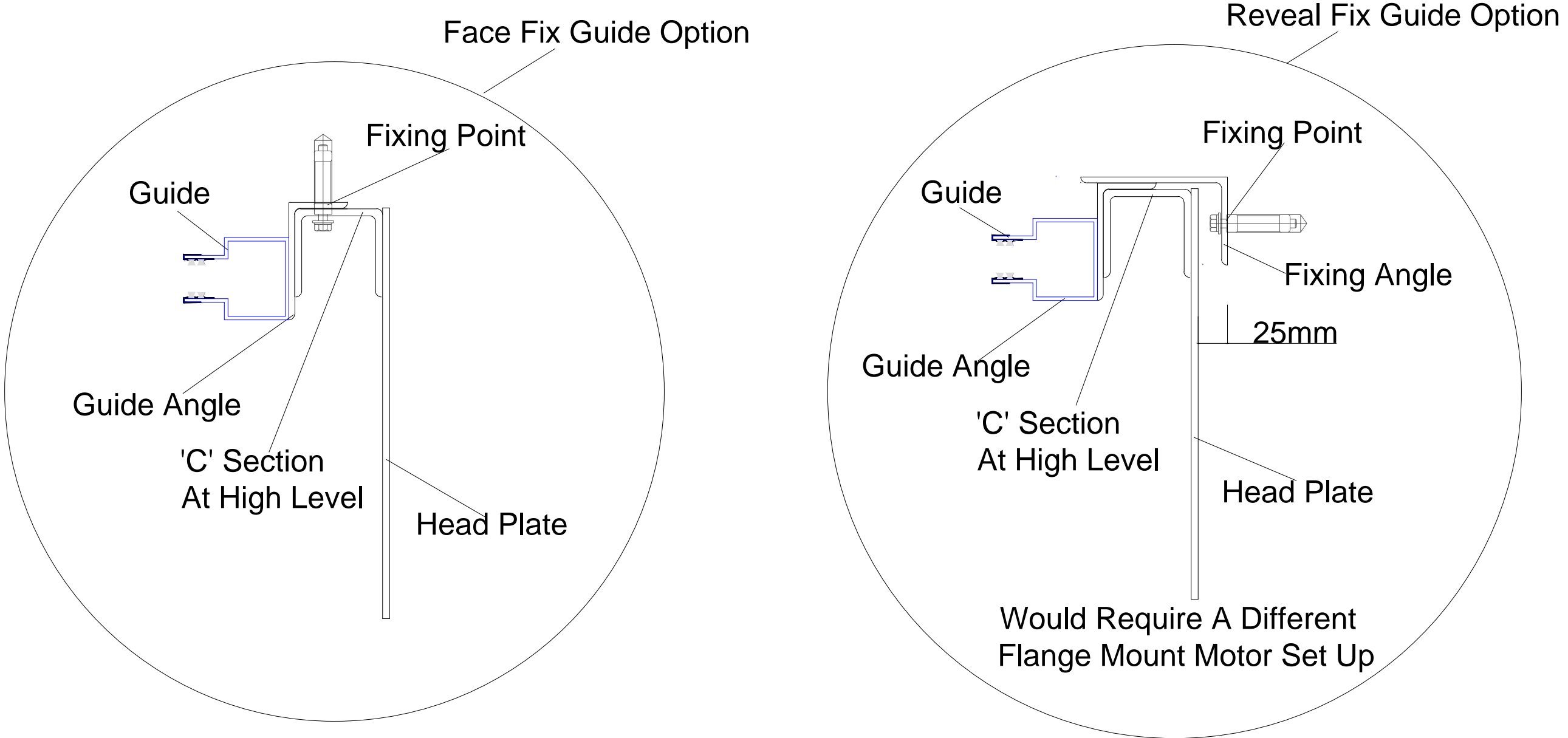
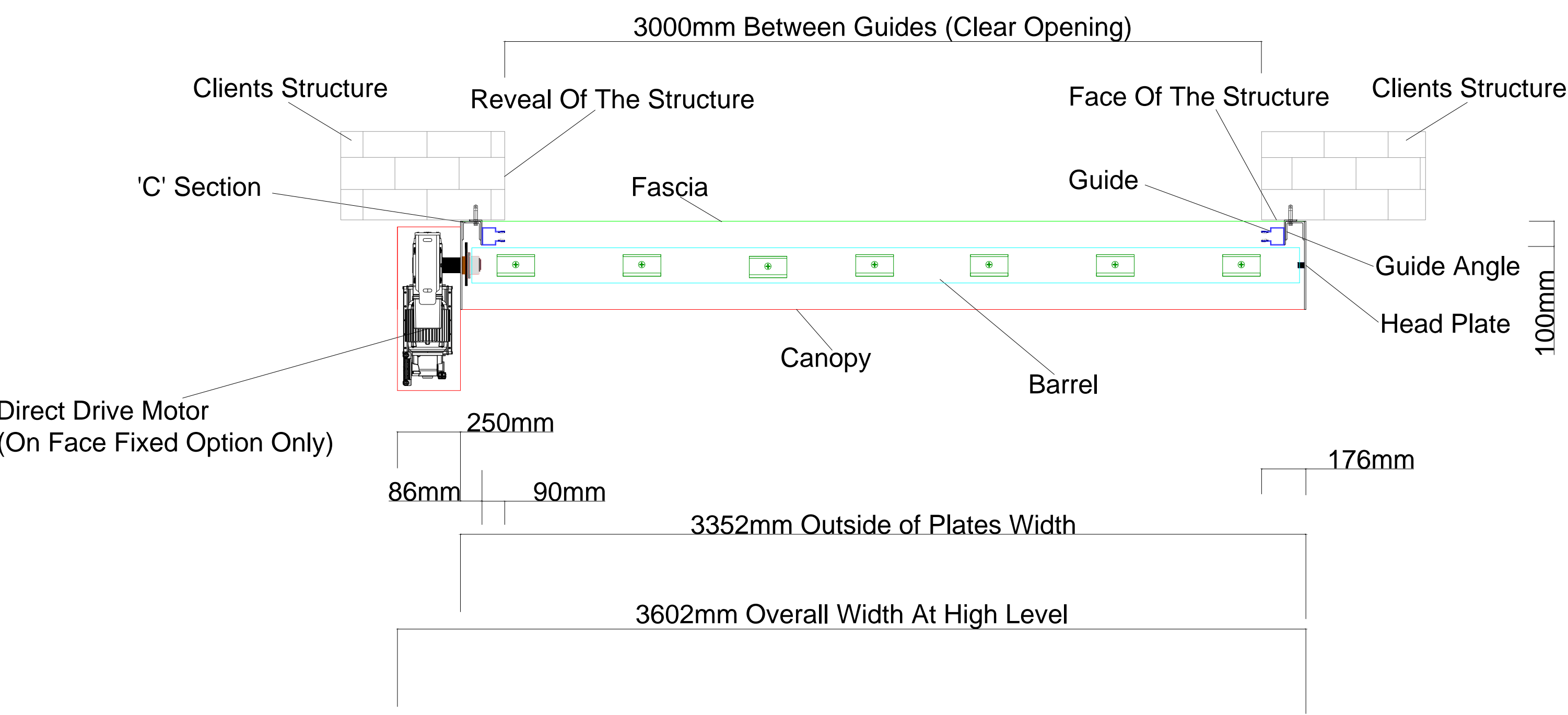


Shutter Ref/No: Armourguard F1/F2 Industrial Motor Shutter



Head Plate Sizes:

Overall Height: Up To 2000mm Head Plate = 350mm
Overall Height: Up To 3000mm Head Plate = 400mm
Overall Height: Up To 4100mm Head Plate = 450mm
Overall Height: Up To 5000mm Head Plate = 500mm
Overall Height: Up To 6000mm Head Plate = 600mm
Overall Height: Up To 7000mm Head Plate = 700mm



Minimum Side Guide Requirements:

Overall Width: Up To 10000mm Guide = 90mm X 70mm

Minimum Guide Angle Requirements:

Overall Height: Up To 2000mm Guide Angle = 100mm x 75mm
Overall Height: Up To 5000mm Guide Angle = 125mm x 75mm
Overall Height: Up To 7000mm Guide Angle = 150mm x 75mm

Disclamier

HAG operates a policy of continuous improvements, product specifidcation may change, and it is advisable to consult with HAG technical advisors Before specifying or ordering

HAG

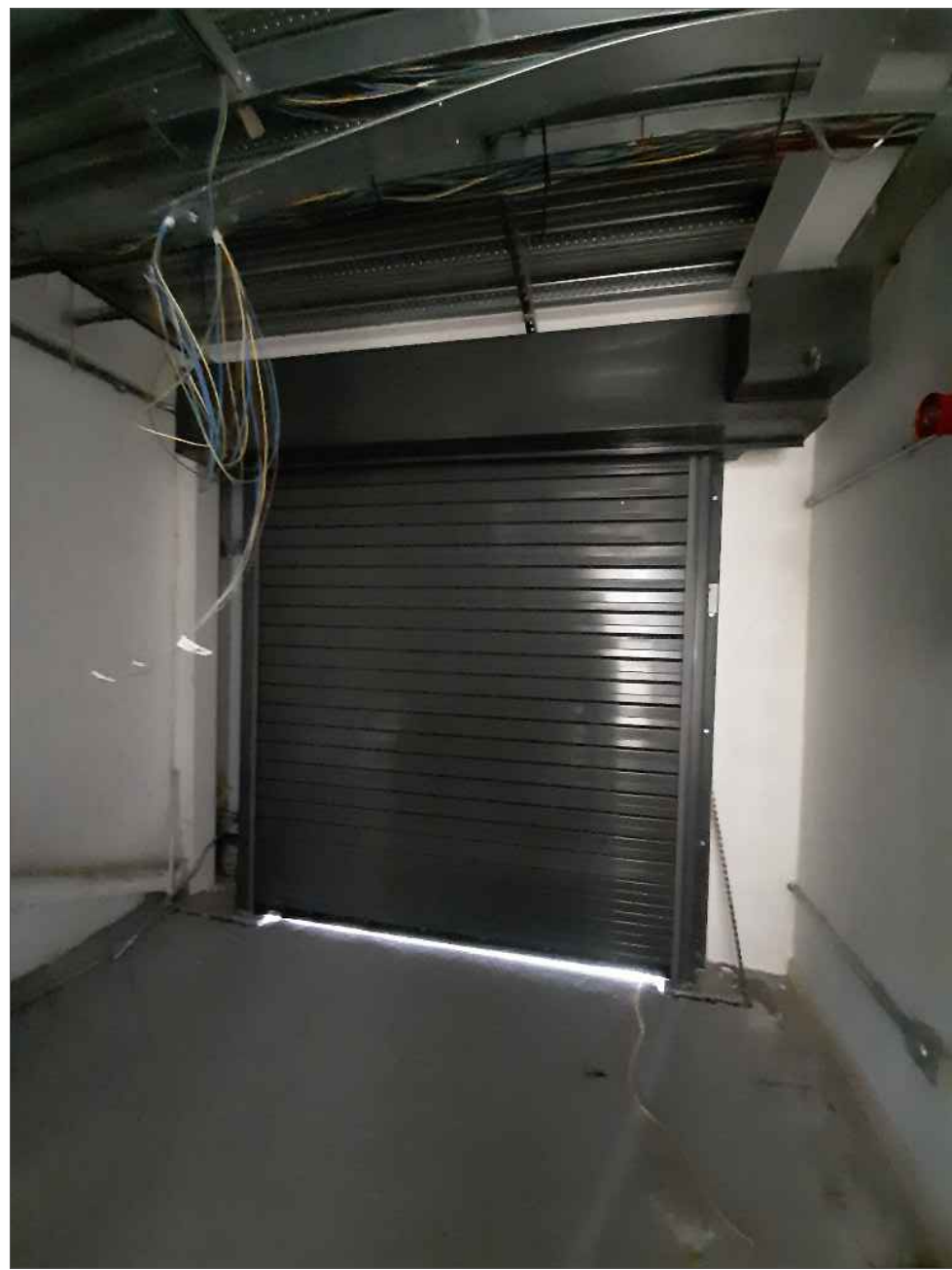
THE DOOR SPECIALISTS

HAG, 1 OAK LANE, FISHPONDS,
BRISTOL BS5 7UY.
TEL 0117 9654 888
EMAIL INFO@HAG.CO.UK

Product Ref: Armourguard F1 (100mm Twin Skinned Insulated Solid Lath)
Thermal Value: 0.73 W/M2K (Through Centre Of Lath) On Individual lath
Thermal Value: 3.0 W/M2K (Through Centre Of Lath) On Assembled Curtain
Operation: Single Or Three Phase Direct Drive Industrial Motor (On Typical Face Fixed Fitting) Or a Single or Three Phase Flange Mount Industrial Motor (On A Reveal Fixed Fitting)
Operator: Push Button Or Key Switch & Manual Chain Override
Fixing: Face Fixed (As Drawn) or Reveal Fixed
Finish: Galvanised, PPC Or Plastisol (Std Colours Available On Request)
Canopy, Fascia & Motor Box: Yes or No (TBC)
Power Requirements: If Single Phase 240V 13 AMP 3 Pin Female Socket (Within 1 Metre Of Opening). If Three Phase 415V 16 AMP 5 Pin Female Socket (Within 1 Metre Of Opening)
Notes:
(If Steel Containment Is Required This Is The Main Contractors Responsibility Not HAG).
If A Painted Finish Is Required We Recommend The Plastisol Finish Over The PPC Finish, As The Plastisol Finish Is Harder Warring, & The PPC Finish Can mark at the Top Of The Curtin, Due to it Rolling On Itself. Client To Provide 240V 13 AMP 3 Pin Female Socket Or Three Phase 415V 16 AMP 5 Pin Female Socket
Full Width Access Of The Shutter Is Required For Maintenance

Scale: NTS

SECURITY DOORS
FIRE DOORS
AUTOMATIC DOORS
ENVIRONMENTAL DOORS
WWW.HAG.CO.UK



Maximum Overall Width: 10000mm
Maximum Overall Height: 7000mm
Curtain Weight: 22Kgs Per m2